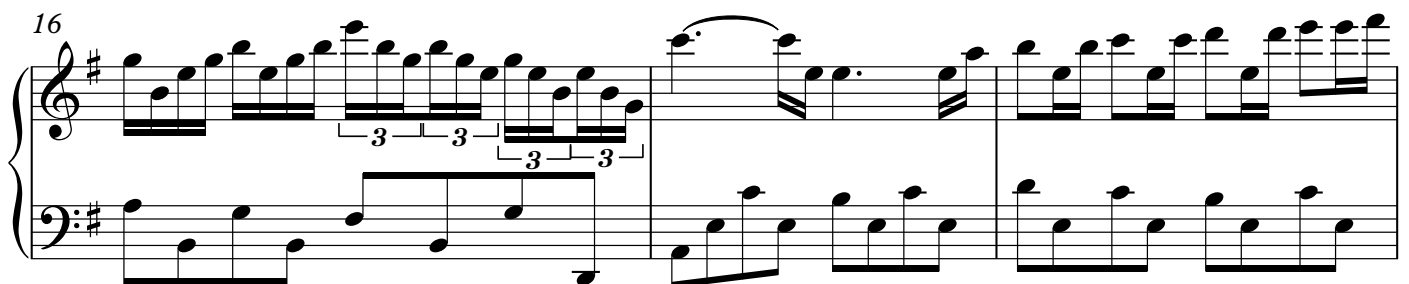
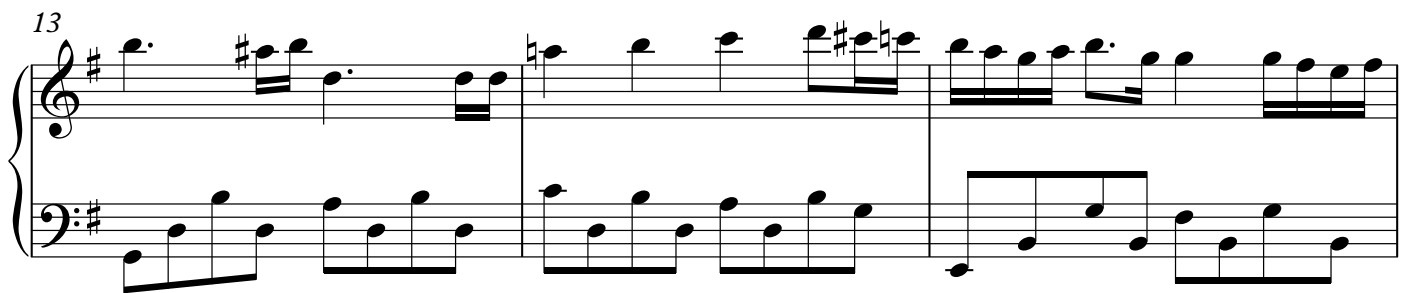
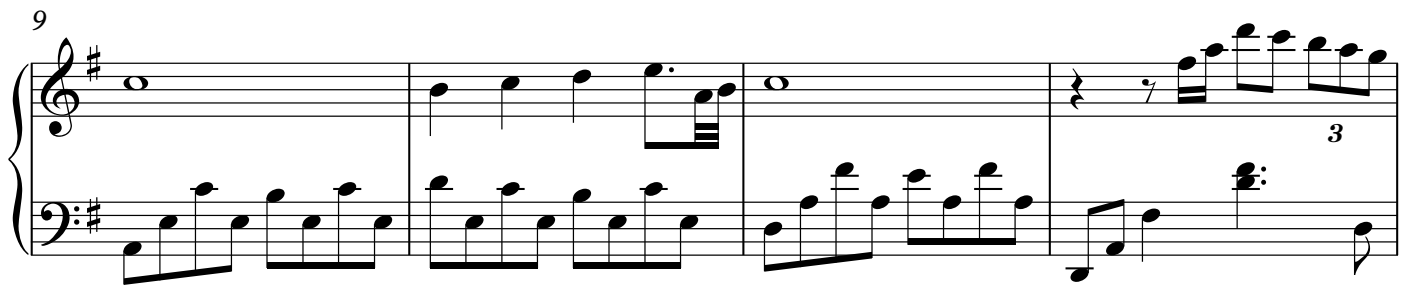
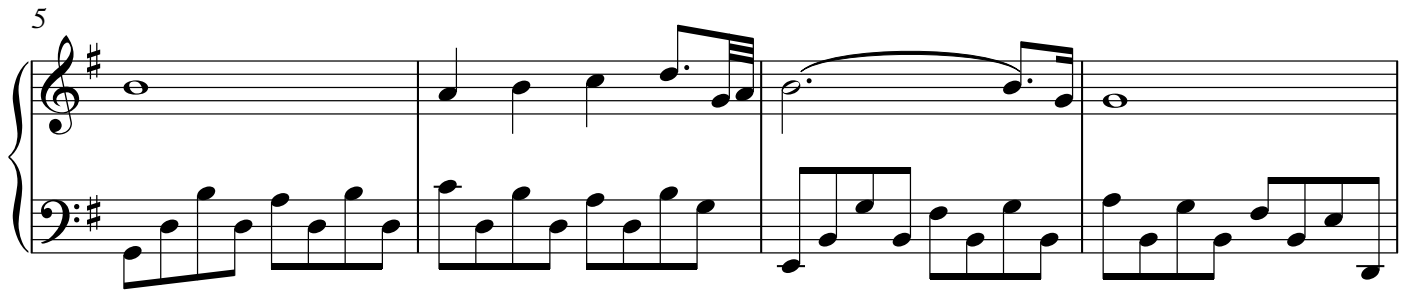
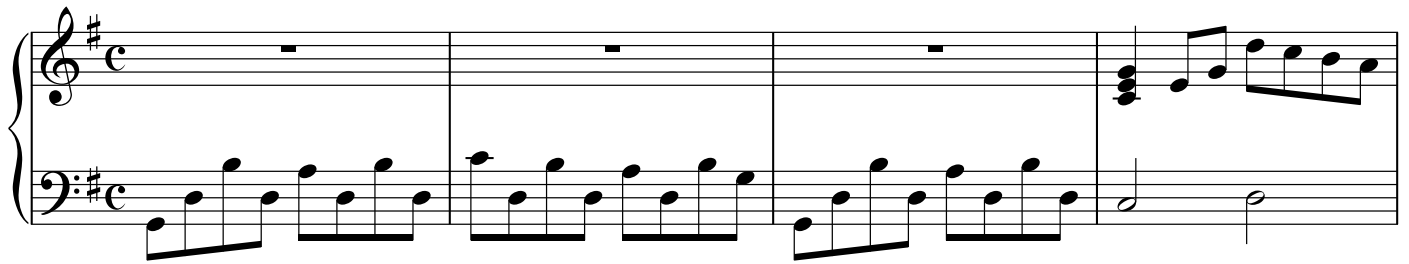


Pokemon RSE - Ending Theme

Composer: Go Ichinose



19

rit.

22

25

28

32

36

3

39

43

rit. 3 3 3 3 3 3

2/4

46

50

54

Measures 54-56 of a musical score in G major. The treble clef staff features a complex melody with many beamed sixteenth and thirty-second notes, including trills and grace notes. The bass clef staff provides a steady accompaniment of eighth notes. Measure 56 ends with a double bar line.

57

Measures 57-59 of the musical score. The treble clef staff continues the intricate melodic line with various ornaments and trills. The bass clef staff maintains the eighth-note accompaniment. Measure 59 concludes with a double bar line.

60

Measures 60-62 of the musical score. The treble clef staff shows a change in texture with some chords and shorter note values. The bass clef staff continues with eighth notes. Measure 62 ends with a double bar line.

63

Measures 63-66 of the musical score. The treble clef staff features sustained chords in the first three measures, followed by a final measure with a whole note chord. The bass clef staff continues with a consistent eighth-note accompaniment. The piece concludes with a double bar line in the final measure.